

# Ezy-Twist® CP-BS Lead Safe™ Cam Action Wall Top Assembly - Cold

## PRODUCT CODES

- 171.71.05.01



## SPECIFICATIONS

- Chrome plate finish for easy cleaning and durability.
- Simple servicing and readily available parts.
- Tough vandal resistant handle that has a unique locking system.
- Quality controlled. Every tap is tested.
- Lead Safe™ brass construction.\*

**IMPORTANT:** All taps are tested in accordance with AS/NZS 3718 and leave our premises in good working order.

\*Our Lead Safe™ product range is compliant with the Lead Free Requirements of the NCC 2022 Vol. Three, Clause A5G4(2) and NSF/ANSI 372.

\*\*Any flow controller incorporated in the outlet to be tightened to prevent removal by hand. As Per AS3718.

## TECHNICAL DATA

Inlet	G 5/8" - Male	
Headwork	Cam Action	
Working Pressure Range (kPa)	Min	50
	Max	500
Working Temperature Range (°C)	Min	5
	Max	60
Nominal Flow Rate (LPM)	N/A	
Construction	Brass	
Finish	Chrome	
<b>NOTE:</b> Galvin Engineering continually strive to improve their products. Specifications may change without notice.		

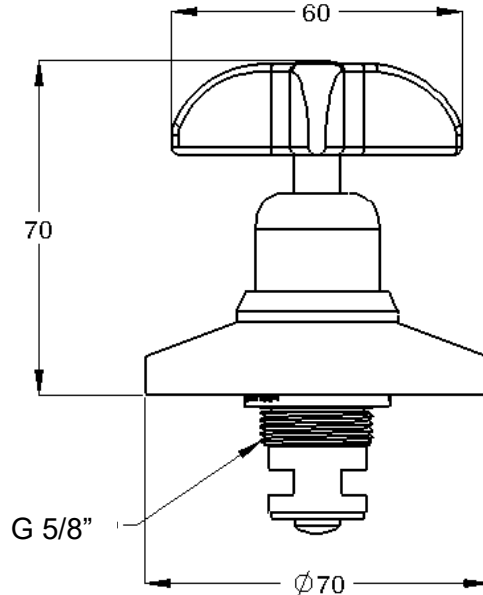
## TOOLS REQUIRED

- Spanner or adjustable crescent
- Key Spanner (supplied)

**PRE-INSTALLATION**

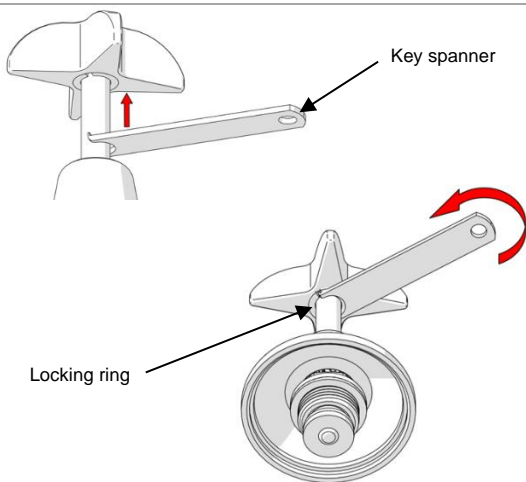
**DIMENSIONS**

Note: Before installation, all lines must be flushed. We recommend that a line strainer be installed prior to drinking taps to eliminate any foreign material.



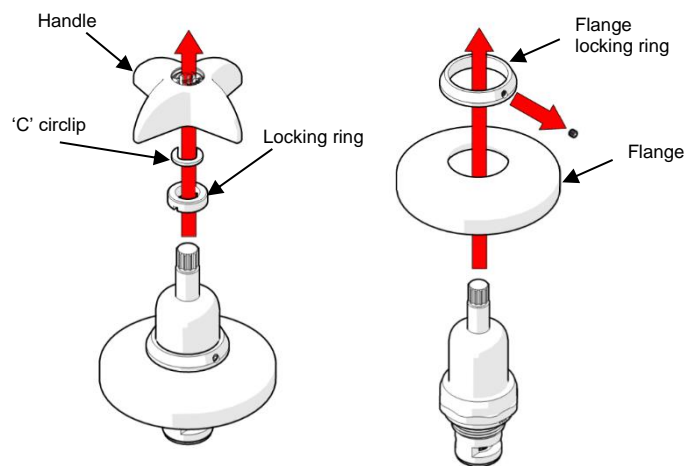
**INSTALLATION**

**IMPORTANT:** Galvin Engineering products must be installed in accordance with these installation instructions and in accordance with AS/NZS 3500, the PCA and your local regulatory requirements. Water and/or electrical supply conditions must also comply to the applicable national and/or state standards. Failing to comply with these provisions shall void the product warranty and may affect the performance of the product.



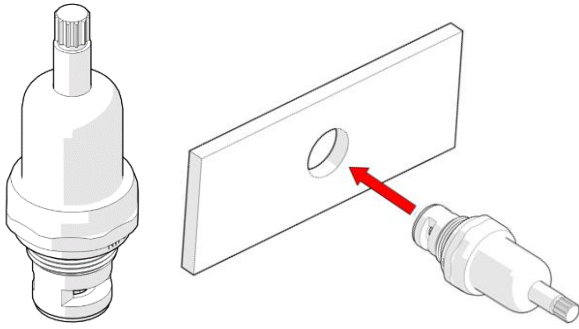
**1. Remove locking ring**

- Using supplied key spanner, unscrew the handle assembly locking ring as shown.



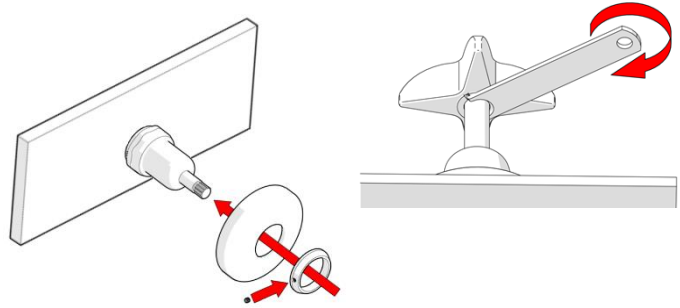
**2. Disassemble**

- Remove the handle, then 'C' circlip and locking ring.
- Unscrew the flange locking ring and remove flange.



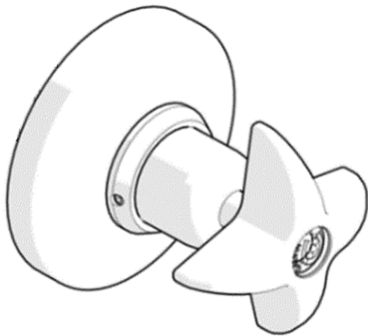
**3. Fit top assembly**

- Fit top assembly ensuring the tap washer and jumper valve is in place.



**4. Re-assemble**

- Fit the assembly components by reversing steps 2 & 1 as shown.



**5. Testing**

Once the assembly has been installed, test for leaks and correct operation.

<b>TROUBLESHOOTING</b>		
<b>PROBLEM</b>	<b>CAUSE</b>	<b>RECTIFICATION</b>
Water is not flowing from tap	Water supply is turned off	Turn on water supply
Assembly is leaking	The supplied tap washer wasn't installed.	Repeat installation steps ensuring the tap washer is correctly in place
Tap is leaking	Worn jumper valve.	Remove the top assembly and replace the jumper valve

**WARRANTY**

Galvin Engineering products are covered under our Manufacturer's Warranty. Galvin Engineering products must be installed in accordance with the installation instructions and in accordance with AS 3500 and NCC Volume Three, relevant Australian Standards and local authorities applicable to product being installed. Water and electrical supply conditions must also comply to the applicable national and/or state standards, failing to comply with these provisions may void the product warranty and affect performance of the product.

Please visit [www.galvinengineering.com.au](http://www.galvinengineering.com.au) to view the full warranty, our Installation Compliance and Maintenance & Cleaning information as well as any other additional information.

